

Diabetes

Issue: Volume 45(3), March 1996, pp 337-341

Copyright: © 1996 by the American Diabetes Association, Inc.

Publication Type: [Original Article]

ISSN: 0012-1797

Accession: 00003439-199603000-00010

[Original Article]

Long-Term Normoglycemic Remission in Black Newly Diagnosed NIDDM Subjects

Banerji, Mary Ann; Chaiken, Rochelle L.; Lebovitz, Harold E.

Author Information

From the Department of Medicine, State University of New York Health Science Center at Brooklyn, Brooklyn, New York.

Address correspondence and reprint requests to Dr. Mary Ann Banerji, SUNY Health Science Center at Brooklyn, 450

Clarkson Ave., Box 1205, Brooklyn, NY 11203.

Received for publication 11 July 1995 and accepted in revised form 3 November 1995.

Abstract

We have defined and characterized the natural history of spontaneous near-normoglycemic remission off of antidiabetic medication in 79 black NIDDM subjects. They had initially presented with plasma glucose levels of 37.8 plus/minus 19.3 mmol/l. Baseline clinical metabolic and 8-year prospective data were obtained (51 men and 28 women, mean age 45 plus/minus 10 years, islet-cell or GAD antibody negative). After hospitalization and intensive outpatient treatment, near-normoglycemic remission (fasting plasma glucose 6.1 plus/minus 0.83 mmol/l and HbA_{1c} 0.95 plus/minus 0.10 of upper limit of normal) occurred within 8 plus/minus 10 months of insulin or sulfonylurea therapy. This was unrelated to the resolution of stress or significant weight loss (1.9 plus/minus 4.97 kg). Metabolic studies performed during remission showed 17 percent normal, 33 percent impaired, and 50 percent diabetic glucose tolerance. Glucose disposal (1 mU [bullet] kg sup -1 [bullet] min sup -1 euglycemic insulin clamp with D-[3-³H]glucose) was higher in the normal glucose tolerance group compared with the impaired and diabetic groups (37.8 plus/minus 10.2 vs. 26.1 plus/minus 10.7 and 26.7 plus/minus 12.0 micromole [bullet] kg sup -1 [bullet] min sup -1; P less than 0.05) despite similar BMIs in all three groups (28.8 plus/minus 3.7 kg/m²). Insulin secretion was below the normal range. Of 79 patients, 27 relapsed. A Kaplan-Meier survival analysis gives a median time of 40 months to relapse. Higher presenting plasma glucose and male sex predicted earlier relapse. Near-normoglycemic remission may occur in up to 30 percent of black new-onset NIDDM patients. It appears to be associated with intensive initial glycemic regulation and may be a method of decreasing the development of microvascular complications in NIDDM. *Diabetes* 45:337-341, 1996

FPG, fasting plasma glucose; HPLC, high-performance liquid chromatography; OGTT, oral glucose tolerance test.

Long-term complications of diabetes are correlated with the magnitude of chronic hyperglycemia as estimated by mean HbA_{1c} levels and duration of hyperglycemia [1-3]. This leads to two potential strategies for decreasing or eliminating microvascular, neuropathic, and macrovascular complications: tight glycemic control and a decrease in the number of years during which hyperglycemia is present. Considerable data are available for IDDM patients both to determine the effects of various levels of glycemic control on complications and to extrapolate the benefits of delaying the development of hyperglycemia. While fewer data are available, they suggest similar effects in NIDDM [1,4].

Several years ago, we reported spontaneous near-normoglycemic remissions in a small cohort of black NIDDM patients who initially presented with acute severe hyperglycemia [5]. Recently, we have demonstrated that remissions can be significantly prolonged with low-dose sulfonylurea therapy [6]. Thus, one strategy for decreasing complications in NIDDM could be to maximize the induction and prolong the duration of near-normoglycemic remission.

Implementing this strategy requires identifying the factors involved in the induction and maintenance of near-normoglycemic remission. This report describes our studies in 79 patients, 71 of whom have been followed prospectively from the onset of their original hyperglycemia and the inception of their near-normoglycemic remission.

RESEARCH DESIGN AND METHODS

Population. A total of 79 black NIDDM subjects with near-normoglycemic remission from the diabetes service at Kings County Hospital and State University of New York Health Science Center at Brooklyn were studied. The selection criteria were as follows: 1) presentation with plasma glucose greater or equal to 16.7 mmol/l with symptoms of hyperglycemia usually requiring hospitalization, 2) a defined outpatient treatment period, and 3) a 2-month period of normoglycemia off of antidiabetic medication before any study. Near-normoglycemia was defined as fasting plasma glucose (FPG) less or equal to 6.4 mmol/l and/or HbA_{1c} within the normal range. Patients have been followed at 1- to 6-month intervals or until relapse. Relapse is defined as a single FPG level of greater or equal to 7.8 mmol/l with symptoms of hyperglycemia or three consecutive weekly FPG values of greater than 7.8 mmol/l.

Of the subjects, 63 could be included in an analysis of the natural history and predictors of near-normoglycemic remission (subjects who developed near-normoglycemic remission after 1985). The patients were followed for nearly 8 years. This excluded eight subjects who were in remission for varying periods of time before baseline study and eight subjects who received low-dose sulfonylurea treatment in a preliminary intervention trial.

During the initial outpatient treatment, the goal was to achieve excellent glycemic control through diet and diabetes education, self monitoring of blood glucose, and medication. During near-normoglycemic remission, patients were able to occasionally indulge in barbecued food, ice cream, or cake without relapsing.

Procedures

Glucose tolerance and insulin secretion. A standard oral glucose tolerance test (OGTT) was performed after an overnight fast, using 75 g of oral glucose. Plasma was obtained at 0, 30, 60, 90, and 120 min for glucose and insulin measurements, and the results were interpreted using the World Health Organization criteria [7]. Glucose and insulin areas were calculated using trapezoidal estimation.

Insulin-mediated glucose disposal. Insulin-mediated glucose disposal was measured using the euglycemic hyperinsulinemic clamp with 1 mU [bullet] kg sup -1 [bullet] min sup -1 insulin and D-[3-³H]glucose infusion [8-10], as previously described [11,12]. Insulin resistance was defined as glucose disposal less or equal to 27.8 micromole [bullet] kg sup -1 [bullet] min sup -1 [12].

Subjects had constant body weights for at least 2 months before the study and had consumed at least 150 g of carbohydrate for 3 days before any study. No patient had significant renal, hepatic, or cardiac disease, and none were using agents known to affect glucose metabolism. The study was approved by the institutional review board. All patients gave written informed consent and were studied in the Clinical Research Center.

Analytical method. Plasma glucose was measured by a glucose oxidase method. Serum insulin was measured with a double-antibody radioimmunoassay technique with a lower limit of detection of 15 pmol/l. The cross-reactivity with proinsulin is 30 percent. HbA_{1c} was determined by an automated high-performance liquid chromatography (HPLC) technique with an upper limit of normal range of less or equal to 4.9 percent or the Miles DC 2000 with an upper limit of normal of less or equal to 6.3 percent. All values are expressed as the ratio to the upper limit of normal for the particular assay used. Evidence for autoimmune disease was assessed by anti-islet-cell [13] or GAD [14] antibodies.

Materials. Human insulin was supplied by Lilly (Indianapolis, IN). D-[3-³H]glucose (13.5 Ci/mmol) was purchased from Du Pont-NEN (Boston, MA) and had been chromatographed to 98 percent purity by HPLC.

Statistical analysis. Group means were compared using Student's t test and analysis of variance. Data are expressed as mean plus/minus SD. A Kaplan-Meier survival analysis and Cox hazard proportion analysis determined the time to hyperglycemic relapse and variables predictive of long-term near-normoglycemic remission [15].

RESULTS

Clinical characteristics at the time of near normoglycemia. A total of 79 patients were near-normoglycemic on no pharmacological therapy Table 1 and Table 2. Their FPG was 6.05 plus/minus 0.83 mmol/l, and their HbA_{1c} was 0.95 plus/minus 0.10 of the upper limit of normal. Although the FPG and HbA_{1c} levels indicated normoglycemia (all had FPG levels less than 6.4 mmol/l and/or normal HbA_{1c} levels), OGTTs performed in 72 of 79 cases showed normal tolerance in 12 patients (16.7 percent), impaired tolerance in 24 patients (33.3 percent), and diabetic tolerance (mean 2-h plasma glucose 13.3 mmol/l) in 36 patients (50 percent).

<i>n</i>	79
Sex (M/F)	51/28
Age (years)	45.4 ± 10.4
Family history of diabetes	62 (78.5%)
Glucose in remission (mmol/l)	6.05 ± 0.83
BMI in remission (kg/m ²)	28.82 ± 3.72
Presenting plasma glucose (mmol/l)	37.8 ± 19.3 (16.7–133.3)
Presenting in diabetic ketoacidosis	21 (26.6%)
Precipitating events	3

Data are means ± SD or *n* (%).

Table 1. Clinical features of patients in remission

Glucose tolerance	<i>n</i>	Mean duration of treatment to remission (months)	Mean weight change to remission (kg)	FPG (mmol/l)	Fasting plasma insulin (pmol/l)	HbA _{1c}	Treatment (<i>n</i>)
Normal	12	7.0 ± 5.3	-4.90 ± 6.00	5.2 ± 0.7	66 ± 42	0.93 ± 0.08	Sulfonylurea (3) Insulin (4) Both (4) Diet (1)
Impaired	24	6.6 ± 8.2	-1.70 ± 6.20	6.1 ± 0.6	84 ± 54	0.96 ± 0.10	Sulfonylurea (11) Insulin (6) Both (7)
Diabetic	36	9.5 ± 14.6	-0.88 ± 3.30	6.4 ± 0.7	96 ± 60	0.95 ± 0.12	Sulfonylurea (15) Insulin (16) Both (5)

Data are means ± SD. HbA_{1c} is given as percentage of the upper limit of normal.

Table 2. Outpatient course and clinical characteristics during remission

The mean BMI was 28.8 plus/minus 3.7 kg/m², and the mean age was 45 plus/minus 10 years. Men predominated at a ratio of 2:1. There were no differences in FPG, age, or BMI between men and women. A positive family history for diabetes was present in 62 of 79 patients (78 percent), and a history of hypertension was present in 28 of 79 patients (35 percent). Islet-cell or GAD antibodies were absent in all in whom they were measured (70 of 79) except one patient, who had borderline positive GAD antibodies. The origins of our black patients were 60 percent African-Caribbean, 37 percent African-American, and 3 percent native African.

Clinical characteristics at time of initial presentation with hyperglycemia. All patients were newly diagnosed, presenting with symptoms of hyperglycemia with a mean plasma glucose of 37.8 plus/minus 19.3 mmol/l (range 16.7-133.3 mmol/l; men 36.3 plus/minus 14.3, women 39.9 plus/minus 26.2 mmol/l) Table 1. Eleven patients presented with plasma glucose of greater than 55.6 mmol/l. Of 79 patients, 74 required hospitalization for intravenous fluid and insulin treatment. Of 79, 21 (26.6 percent) presented in ketoacidosis (pH less than 7.3; positive serum ketones; all GAD antibody negative).

Characteristics of the development of near-normoglycemic remission. Table 2 lists the clinical features associated with the development of near-normoglycemia in the patients. The duration of outpatient treatment before near-normoglycemic remission was similar regardless of whether the patient had normal, impaired, or diabetic glucose tolerance after near-normoglycemic remission occurred. Most patients were treated with insulin acutely, but subsequent treatment was equally likely to be with insulin or sulfonylureas. Pharmacological treatment was tapered gradually by the physician, usually when the patient complained of hypoglycemic symptoms (or it was discontinued by patients because of hypoglycemic symptoms).

During the development of near-normoglycemic remission, weight change was determined from the time of the first clinic visit to the onset of near-normoglycemic remission. The time of the first clinic visit (usually within 2 weeks of hospital discharge) was chosen to minimize the effect of the catabolic and dehydrated state associated with the presenting hyperglycemia. Weight change ranged from a loss of 20 kg to a gain of 14.5 kg, with a mean plus/minus SD loss of 1.9 plus/minus 4.97 kg. A total of 17 of 79 (22 percent) subjects lost greater than 5 percent of their initial body weight, 43 of 79 (54 percent) subjects lost 0-5 percent, 12 of 79 (15 percent) subjects gained less than 5 percent, and 6 of 79 (7.5 percent) subjects gained greater than 5 percent of their initial body weight. The normalization of glucose tolerance was associated with the greatest amount of weight loss (4.9 plus/minus 6.0 kg) compared with those with impaired and diabetic glucose tolerance (1.7 plus/minus 6.2 and 0.88 plus/minus 3.28 kg) (P less than 0.08).

OGTT and insulin secretion. The glucose area in response to oral glucose differed significantly, as expected in the normal, impaired, and diabetic glucose tolerant groups [Table 3](#). The absolute insulin response (insulin area minus basal) to oral glucose was lower in all three groups as compared with nondiabetic control subjects (n = 15, age 43.9 plus/minus 8.0 years, BMI 26.14 plus/minus 2.18 kg/m²). There was no significant difference in the frequency of hypertension among the three groups.

OGTT	n	BMI (kg/m ²)	Glucose area 0–120 min (mmol · min ⁻¹ · l ⁻¹)	Insulin area minus basal 0–120 min (pmol · min ⁻¹ · l ⁻¹)	Glucose disposal (n) (μmol · kg ⁻¹ · min ⁻¹)
Normal	12	27.8 ± 1.9	836 ± 98*	24,726 ± 19,878†	37.78 ± 10.2 (8)‡
Impaired	24	28.2 ± 4.8	1,073 ± 92*	30,156 ± 13,734†	26.1 ± 10.7 (18)
Diabetic	36	29.7 ± 3.2	1,361 ± 167*	30,654 ± 22,452†	26.7 ± 12.0 (28)

Data are means ± SD. Nondiabetic control subjects: insulin area minus basal 43,758 ± 22,356 pmol · min⁻¹ · l⁻¹; glucose disposal 42.2 ± 4.7 μmol · kg⁻¹ · min⁻¹. *P < 0.001, normal vs. impaired vs. diabetic OGTT. †P < 0.05 vs. nondiabetic control subjects. ‡P < 0.05, normal vs. impaired or diabetic OGTT.

Table 3. Metabolic characteristics during remission

Insulin-mediated glucose disposal. Of 79 subjects, 52 (66 percent) had glucose disposal measured during the euglycemic insulin clamp. Of the 52, 43 (83 percent) subjects had a BMI of less or equal to 30 kg/m² and 9 had a BMI of greater than 30 kg/m². Of those subjects with a BMI of less or equal to 30 kg/m², half (22 of 43) had normal sensitivity to insulin and half (21 of 43) were insulin-resistant (mean plus/minus SD, 40.33 plus/minus 5.0 and 18.9 plus/minus 3.9 micromole [bullet] kg sup -1 [bullet] min sup -1, respectively; P less than 0.0001). The insulin-resistant subjects were more obese than the insulin-sensitive subjects (BMI 27.13 plus/minus 2.3 and 25.1 plus/minus 2.16 kg/m², respectively; P less than 0.005). Of the obese subjects (BMI greater than 30 kg/m²), most (7 of 9) were insulin resistant. In terms of glucose tolerance, glucose disposal was significantly higher in the group with normal glucose tolerance compared with the groups with impaired or diabetic glucose tolerance (37.78 plus/minus 10.17 vs. 26.1 plus/minus 10.7, 26.7 plus/minus 12.0 micromole [bullet] kg sup -1 [bullet] min sup -1, respectively; P less than 0.05) and was not different from nondiabetic control subjects (42.2 plus/minus 4.7 micromole [bullet] kg sup -1 [bullet] min sup -1, n = 8, age 45 years, BMI 25.2 plus/minus 3.01 kg/m sup 2) [Table 3](#). Of 8 subjects with normal glucose tolerance, 7 were normally insulin sensitive, while only half the subjects with impaired or diabetic glucose tolerance were insulin sensitive (6 of 14 and 10 of 21; P less than 0.05).

Hyperglycemic relapse and final study. A total of 71 patients (45 men and 26 women) in near-normoglycemic remission not treated with antidiabetic agents were followed long-term. Of the 71, 6 (8.5 percent) patients remained in remission for a mean of 8.8 years (5.8-12.2 years). Twenty-seven (10 women and 17 men) patients relapsed into hyperglycemia, while 44 (17 women and 27 men) remained in near-normoglycemic remission at the time of their last follow-up visit [Table 4](#). One-third of both men and women relapsed. Nine individuals who had a major medical or surgical illness did not relapse during the event (mean FPG during remission 5.86 plus/minus 0.57 mmol/l and during illness 5.62 plus/minus 0.65 mmol/l; NS). Relapse was not associated with weight gain during the near-normoglycemic remission phase (relapse versus near-normoglycemic remission: 0.90 plus/minus 4.22 vs. -1.3 plus/minus 4.0 kg), and their final BMIs were similar (28.5 plus/minus 4.2 vs. 29.04 plus/minus 3.9 kg/m²). Those individuals who remained in near-normoglycemic remission showed no significant change from their initial near-normoglycemic remission data.

	Relapse	Remission	<i>P</i>
<i>n</i> (F/M)	27 (10/17)	44 (17/27)	
Initial FPG (mmol/l)	6.1 ± 0.7	6.1 ± 0.9	NS
Final FPG (mmol/l)	12.5 ± 7	4.9 ± 3.1	<0.0001
Weight change after remission (kg)	0.48 ± 4.10 (24)	-1.3 ± 4.0 (30)	NS
Final weight (kg)	82.2 ± 15 (24)	84.15 ± 12.5 (30)	NS
Final BMI (kg/m ²)	28.5 ± 4.2 (24)	29.0 ± 3.9 (30)	NS

Data are means ± SD (*n*).

Table 4. Characteristics at relapse or final visit

Longitudinal studies. A Kaplan-Meier survival analysis was performed on the 63 subjects in near-normoglycemic remission whom we had followed from the initial outset of hyperglycemia (after 1985) and who had received no antidiabetic therapy from the onset of near-normoglycemic remission until relapse. Figure 1 shows that the median time to relapse was 39.72 months.

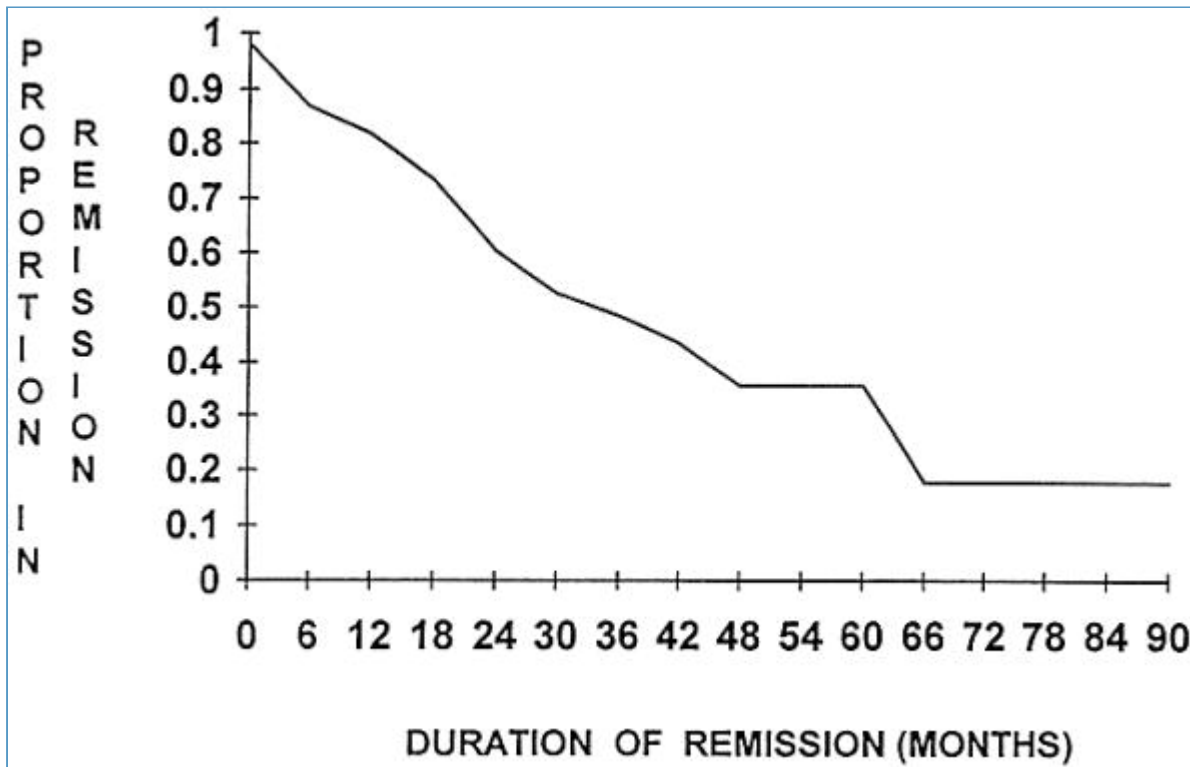


Figure 1. A Kaplan-Meier survival curve showing the proportion in remission over 90 months.

A survival analysis with covariates using the Cox models showed that the duration of near-normoglycemic remission was not significantly related to glucose tolerance, initial near-normoglycemic remission, FPG, insulin or glucose response to oral glucose, BMI, insulin action, or weight gain or loss from the onset of near-normoglycemic remission until the time of relapse or last follow-up visit. The data suggest that a lower presenting plasma glucose positively affected the duration of near-normoglycemic remission, while made sex adversely affected it (odds ratio 1.0027 for each 0.055 mmol/l of presenting plasma glucose, 95 percent CI 1.004-1.013, *P* less than 0.001; odds ratio 4.529 for men, 95 percent CI 1.413-14.519, *P* less than 0.001). Thus, a presenting plasma glucose of 33.3 mmol/l increased the risk of relapse twofold compared with one of 16.7 mmol/l, all other variables being equal; and similarly, male sex conferred a 4.5-fold risk for relapse.

DISCUSSION

The present report extends our previous observations that near-normoglycemic remission after treatment of newly presenting severe hyperglycemia in black NIDDM subjects is a significant phenomenon [5]. It occurs more commonly in men than in women (almost 2:1) and in normal weight to moderately obese individuals with a younger age of onset (less or equal to 60 years). Near-normoglycemic remission is most likely to occur within the first year of treatment and is not associated with marked weight loss. The median duration of near-normoglycemic remission is 40 months. As many as 10 percent may have a near-normoglycemic remission that lasts for 5-10 years. Near-normoglycemic remission occurs in both insulin-sensitive and insulin-resistant NIDDM variants. During near-normoglycemic remission, glucose homeostasis is not disturbed by stressful medical illness or occasional dietary indiscretion. These subjects are considered to have NIDDM because of residual insulin secretion, positive family histories of diabetes, absent autoimmune markers, and clinical course.

The frequency of near-normoglycemic remission in NIDDM is not known. A retrospective analysis of self-selected newly diagnosed patients who attended diabetes education classes and had intensive glucose management showed that 20 of 67 (30 percent) patients went into near-normoglycemic remission as compared with 3 of 91 (3 percent) patients who did not participate in such a program [16]. Preliminary prospective data from an ongoing study of all consecutive newly diagnosed diabetic subjects admitted to Kings County Hospital with severe hyperglycemia and treated intensively supports this estimate [17]. These data suggest that with appropriate management, the frequency of near-normoglycemic remission in this population can be quite significant.

There is little data in the literature with which to compare our results. Pirart and Lauvaux [18] described a series of 280 European NIDDM subjects in remission. Their patients had presented with mild hyperglycemia of 16.7 mmol/l; 104 of 280 lost greater than 10 percent of their body weight, and 50 percent relapsed within the first year of remission [18]. Our population differs remarkably from theirs, and no comparison seems valid.

The relationship of weight loss and the development of near-normoglycemia was reported by the U.K. Prospective Diabetes Study [19]: 2,597 newly diagnosed NIDDM patients were treated initially for 3 months and 823 subsequently for 12 months with diet only. Of those presenting with an FPG of 6-8 mmol/l, 50 percent achieved a FPG less than 6 mmol/l after 3 months of a weight-reducing diet. The mean weight loss was 10 kg. Only 10 percent of those with an FPG of 14-16 mmol/l achieved an FPG of less than 6 mmol/l; the mean weight loss was 26 kg after 3 months of diet treatment. Only 54 percent of those who were normoglycemic at 3 months were able to maintain it for 1 year. Thus, achieving normoglycemia required a large amount of weight loss and was a function of the starting blood glucose. These data from whites are very different and are not comparable to ours.

The etiology of near-normoglycemic remission in our patients is not clear. It does not represent recovery from an identifiable precipitating event. It cannot be related to weight loss. It is not the honeymoon phase of IDDM [14]. It occurs within months and appears to be associated with very good glycemic control in the early phases of new-onset diabetes.

Two studies describe that a significant percentage of subjects with good glycemic control on chronic sulfonylurea therapy were able to remain euglycemic when switched to placebo for periods up to and beyond 1 year [20,21]. In contrast, in this series, insulin and sulfonylureas were used equally frequently for similar durations, making the association of a specific type of treatment with near-normoglycemic remission unlikely.

One hypothesis is that the acute hyperglycemia is caused by an abrupt but reversible decrease in insulin secretion. Hyperglycemia impairs the ability of the beta-cell to recover, while very good glycemic control over weeks to months allows for appreciable beta-cell recovery [17,22-25]. The relapse may represent a progressive decline in insulin secretory capacity. Preliminary analysis of serial studies on glucose-mediated insulin secretion in our subjects suggests that near-normoglycemic remission is associated with the maintenance of insulin secretory capacity, while relapse is associated with a 50-75 percent decrease in insulin secretion [12].

It is not known whether near-normoglycemic remission is unique to black individuals. Physicians caring predominately for black and Hispanic patients are familiar with this phenomenon. The five cases of remission reported in the literature were black individuals. Rendell's series of 11 remission patients did not specify the race [26-30].

The ability to induce and prolong near-normoglycemic remissions in NIDDM is likely to decrease complications. NIDDM subjects in near-normoglycemic remission have normal glycemic control (HbA_{1c} and FPG) with little effort or hypoglycemia. Normoglycemic remission for 40 months is estimated to decrease proliferative retinopathy by 50-60 percent 10 years after the diagnosis of NIDDM in those presenting at age 45 [31]. Prolonging near-normoglycemic remission, as we have reported, with the addition of low-dose glipizide could reduce complications further [6].

In conclusion, knowledge of the existence of long-term near-normoglycemic remission and development of strategies to increase its rate and duration are potentially important approaches to decreasing complications in NIDDM. This is clearly possible now in black NIDDM patients and remains to be explored in other groups.

ACKNOWLEDGMENTS

The studies were supported by grants from the Clinical Research Center branch of the Division of Research Resources (RR-00318) of the National Institutes of Health.

We acknowledge the excellent assistance of the nurses and staff of the Clinical Research Center at State University of New York Health Science Center at Brooklyn in carrying out these studies. We also acknowledge Drs. G. Eisenbarth and R. Jackson for performing the anti-islet-cell antibody assays and Dr. P. Zimmet for performing the GAD antibody assay.

REFERENCES

1. Pirart J: Diabetes mellitus and its degenerative complications: a prospective study of 4,400 patients observed between 1947 and 1973. *Diabetes Care* 1:168-188, 252-263, 1978 [Context Link]

2. Reichard P, Nilsson B-N, Rosenqvist U: The effect of long term intensified insulin treatment on the development of microvascular complications of diabetes mellitus. *N Engl J Med* 329:304-309, 1993 [Ovid Full Text](#) | [Bibliographic Links](#) | [\[Context Link\]](#)
3. The Diabetes Control and Complications Trial Research Group: The effect of intensive treatment of diabetes on the development and progression of long-term complications in insulin-dependent diabetes mellitus. *N Engl J Med* 329:977-986, 1993 [\[Context Link\]](#)
4. Klein R: Hyperglycemia and microvascular and macrovascular disease in diabetes. *Diabetes Care* 18:258-268, 1995 [Ovid Full Text](#) | [Bibliographic Links](#) | [\[Context Link\]](#)
5. Banerji MA, Lebovitz HE: Near-normoglycemic remission in non-insulin dependent diabetes mellitus: clinical characteristics of remission and relapse in black patients. *Medicine* 69:176-185, 1990 [Ovid Full Text](#) | [Request Permissions](#) | [Bibliographic Links](#) | [\[Context Link\]](#)
6. Banerji MA, Chaiken RC, Lebovitz HE: Prolongation of near-normoglycemic remission in NIDDM with sulfonylurea treatment. *Diabetes* 44: 466-470, 1995 [\[Context Link\]](#)
7. National Diabetes Data Group: Classification and diagnosis of diabetes and other categories of glucose intolerance. *Diabetes* 28:1039-1057, 1979 [\[Context Link\]](#)
8. DeFronzo RA, Tobin JD, Andres R: Glucose clamp technique: a method for quantifying insulin secretion and resistance. *Am J Physiol* 237:E214-E223, 1979 [Bibliographic Links](#) | [\[Context Link\]](#)
9. Steele R: Influence of glucose loading and of injected insulin on hepatic glucose output. *Ann NY Acad Sci* 82:420-430, 1959 [\[Context Link\]](#)
10. Cobelli C, Mari A, Ferrannini E: The non-steady state problem: error analysis of Steele's model and new developments for glucose kinetics. *Am J Physiol* 252:E679-E689, 1987 [Bibliographic Links](#) | [\[Context Link\]](#)
11. Banerji MA, Lebovitz HE: Coronary artery disease risk factor profiles in black patients with non-insulin-dependent diabetes mellitus: paradoxical patterns. *Am J Med* 91:51-58, 1991 [Bibliographic Links](#) | [\[Context Link\]](#)
12. Banerji MA, Lebovitz HE: Insulin action in black Americans with NIDDM. *Diabetes Care* 15:1295-1302, 1992 [Bibliographic Links](#) | [\[Context Link\]](#)
13. Dib SA, Coleman PG, Dotta F, Tautkus M, Rabizideh A, Eisenbarth GS: Expression of cytoplasmic islet cell antigens by rat pancreas. *Diabetes* 36:982-985, 1987 [\[Context Link\]](#)
14. Banerji MA, Chaiken RL, Huey H, Tuomi T, Norin AJ, Mackay IR, Rowley MJ, Zimmet

P, Lebovitz HE: GAD antibody negative NIDDM in black subjects with diabetic ketoacidosis and increased frequency of HLA DR3 and DR4. *Diabetes* 43:741-745, 1994

[Bibliographic Links](#) | [\[Context Link\]](#)

15. Lee ET: *Statistical Methods for Survival Data Analysis*. 2nd ed. New York, Wiley, 1992, p. 67-78, 250-263 [\[Context Link\]](#)

16. Hirsch S, Norton M, Harrington P: Education increases the rate of near normoglycemic remission in newly diagnosed NIDDM (Abstract). *Diabetes* 44 (Suppl. 1):88, 1995 [\[Context Link\]](#)

17. McFarlane S, Banerji MA, Chaiken RL, Hirsch S, Harrington P, Lebovitz HE: Induction of remission in black patients with NIDDM (Abstract OR3-2). In 77th Annual Meeting of the Endocrine Society. Bethesda, MD, The Endocrine Society, 1995 [\[Context Link\]](#)

18. Pirart J, Lauvaux JP: Remission in diabetes. In *Handbook of Diabetes Mellitus*. Vol II. Pieffer E, Ed. Munich, Verlag, 1971, p. 443-502 [\[Context Link\]](#)

19. UKPDS Group: UK prospective diabetes study 7: response of fasting plasma glucose to diet therapy in newly presenting type II diabetic patients. *Metabolism* 39:905-912, 1990 [Bibliographic Links](#) | [\[Context Link\]](#)

20. Singer DL, Hurwitz D: Long-term experience with sulfonylureas and placebo. *N Engl J Med* 277:450-456, 1967 [Bibliographic Links](#) | [\[Context Link\]](#)

21. Lev-Ran A: Trial of placebo in long-term chlorpropamide treated diabetics. *Diabetologia* 10:197-200, 1974 [Bibliographic Links](#) | [\[Context Link\]](#)

22. Leahy JR, Cooper HE, Deal DA, Weir GC: Chronic hyperglycemia is associated with impaired glucose influence on insulin secretion: a study in normal rats using chronic in vivo glucose infusions. *J Clin Invest* 77:908-915, 1986 [Full Text](#) | [Bibliographic Links](#) | [\[Context Link\]](#)

23. Rosetti L, Smith D, Shulman GI, Papachristou D, DeFronzo RA: Correction of hyperglycemia with phlorizin normalizes tissue sensitivity to insulin in diabetic rats. *J Clin Invest* 79:1510-1515, 1987 [\[Context Link\]](#)

24. Shah SC, Malone JL, Simpson NE: A randomized trial of intensive insulin therapy in newly diagnosed insulin dependent diabetes mellitus. *N Engl J Med* 320:550-554, 1989 [Bibliographic Links](#) | [\[Context Link\]](#)

25. Keller RJ, Eisenbarth GS, Jackson RA: Insulin prophylaxis in individuals at high risk of type I diabetes. *Lancet* 341:927-928, 1993 [Full Text](#) | [Bibliographic Links](#) | [\[Context Link\]](#)

26. Rendell M, Zariello J, Drew HM, Dranbauer B, Wilson G, Waud J, Ross D: Recovery

from decompensated non-insulin dependent diabetes mellitus: studies of C-peptide secretion. Diabetes Care 4:354-359, 1981 [Bibliographic Links](#) | [\[Context Link\]](#)

27. Cheng TO, Jahraus RC, Traut EF: Extreme hyperglycemia and severe ketosis with spontaneous remission of diabetes mellitus. JAMA 152:1531-1533, 1953 [Bibliographic Links](#) | [\[Context Link\]](#)

28. Crump WJ: The honeymoon period in non-insulin-dependent diabetes mellitus. J Fam Pract 25:78-80, 1978 [Bibliographic Links](#) | [\[Context Link\]](#)

29. Peck FB Jr, Kirtley WR, Peck FB Sr: Complete remission of severe diabetes. Diabetes 7:93-97, 1958 [Bibliographic Links](#) | [\[Context Link\]](#)

30. Genuth SM: Clinical remission in diabetes mellitus: studies of insulin secretion. Diabetes 19:116-121, 1970 [Bibliographic Links](#) | [\[Context Link\]](#)

31. Eastman RC, Silverman R, Harris M, Javitt JC, Chiang YP, Gorden P: Lessening the burden of diabetes. Diabetes Care 16:1095-1102, 1993 [\[Context Link\]](#)

IMAGE GALLERY

Select All



Export Selected to PowerPoint

n	79
Sex (M/F)	51/28
Age (years)	45.4 ± 10.4
Family history of diabetes	62 (78.5%)
Glucose in remission (mmol/l)	6.05 ± 0.83
BMI in remission (kg/m ²)	28.82 ± 3.72
Presenting plasma glucose (mmol/l)	37.8 ± 19.3 (16.7–130.3)
Presenting in diabetic ketoacidosis	21 (26.6%)
Precipitating events	3

Data are means ± SD or n (%).

Table 1

Glucose tolerance test	n	Mean duration of remission (months)	Mean weight (kg)	FPG (mmol/l)	HbA _{1c} (%)	Proportion on insulin (%)
Normal	31	7.0 ± 3.0	64.8 ± 9.8	6.1 ± 0.7	50.7 ± 21	100 (100)
Impaired	31	6.6 ± 3.2	72.9 ± 12.8	8.1 ± 0.8	58 ± 25	100 (100)
Diabetic	17	1.2 ± 0.5	82.2 ± 15	12.5 ± 7	84.15 ± 12.5	100 (100)

Data are means ± SD (n), in parentheses in the upper part of column.

Table 2

Glucose tolerance test	n	Mean duration of remission (months)	Mean weight (kg)	FPG (mmol/l)	HbA _{1c} (%)	Proportion on insulin (%)
Normal	31	7.0 ± 3.0	64.8 ± 9.8	6.1 ± 0.7	50.7 ± 21	100 (100)
Impaired	31	6.6 ± 3.2	72.9 ± 12.8	8.1 ± 0.8	58 ± 25	100 (100)
Diabetic	17	1.2 ± 0.5	82.2 ± 15	12.5 ± 7	84.15 ± 12.5	100 (100)

Data are means ± SD (n), in parentheses in the upper part of column.

Table 3

	Relapse	Remission	P
n (F/M)	27 (10/17)	44 (17/27)	
Initial FPG (mmol/l)	6.1 ± 0.7	6.1 ± 0.9	NS
Final FPG (mmol/l)	12.5 ± 7	4.9 ± 3.1	<0.0001
Weight change after remission (kg)	0.48 ± 4.10 (24)	-1.3 ± 4.0 (30)	NS
Final weight (kg)	82.2 ± 15 (24)	84.15 ± 12.5 (30)	NS
Final BMI (kg/m ²)	28.5 ± 4.2 (24)	29.0 ± 3.9 (30)	NS

Data are means ± SD (n).

Table 4

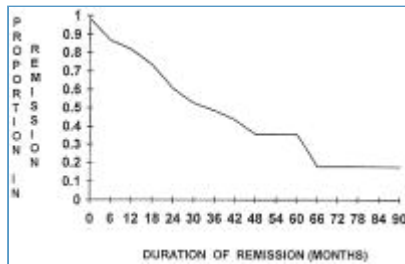


Figure 1

[Back to Top](#)